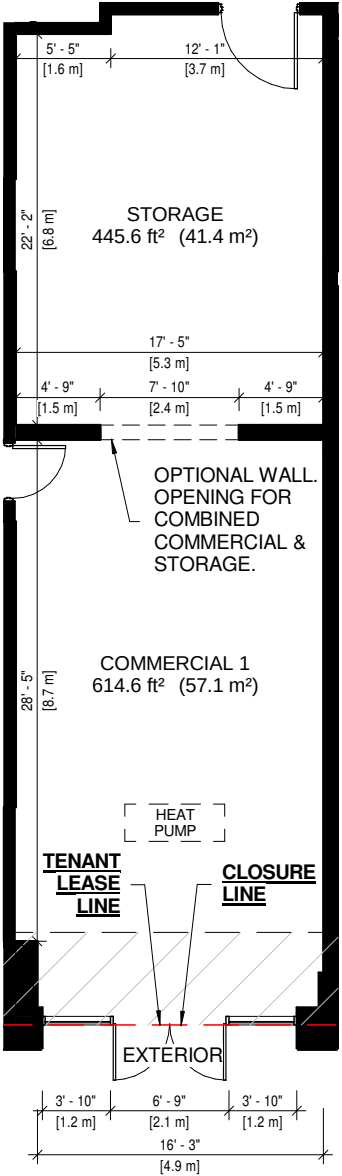


130-7 COLUMBIA ST W
WATERLOO, ONTARIO



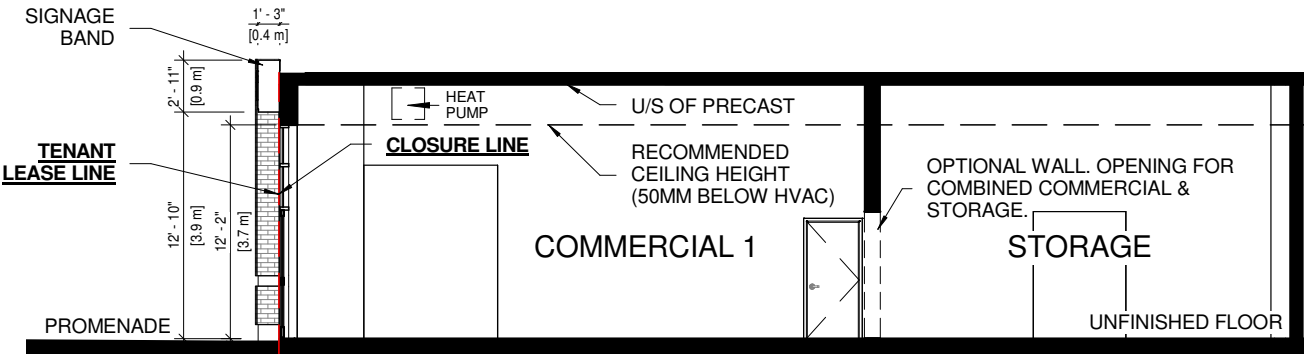
COMMERCIAL SUITE 711 - PLAN
SCALE: 1 : 125

MECHANICAL NOTES

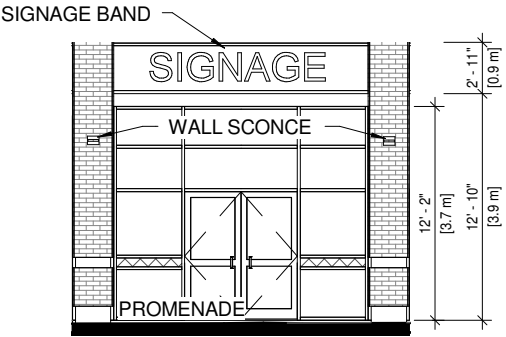
- HEATING PROVIDED = 51.1 MBH
- COOLING PROVIDED = 62.8 MBH
- PROVISIONS FOR 25MM (1") DOMESTIC HOT WATER
- PROVISIONS FOR 25MM (1") DOMESTIC COLD WATER
- PROVISIONS FOR 102MM (4") SANITARY DRAIN
- PROVISIONS FOR FUTURE KITCHEN EXHAUST HOOD

GENERAL NOTES

1. HATCHED AREA REPRESENTS LANDLORD CONTROL ZONE.
2. ALL EXISTING WALLS WITHIN SUITES ARE UNFINISHED GYPSUM BOARD ON METAL STUD OR PRECAST CONCRETE UNLESS NOTED OTHERWISE. EXISTING DUCTWORK OMITTED FOR CLARITY. UNIT DESIGNERS MUST REVIEW SPACES ON-SITE.
3. FIRE RATED BULKHEADS ARE POSITIONED IN PERMANENT LOCATIONS.



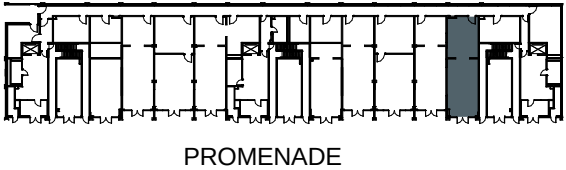
COMMERCIAL SUITE 711 - SECTION
SCALE: 1 : 125



COMMERCIAL SUITE 711 - ELEVATION A
SCALE: 1 : 125

GROSS AREA
1060 FT2 (98.5 M2)

NET AREA
969 FT2 (90.0 M2)



the HUB
BY ACCOMMOD8U

commercial@accommod8u.com
www.accommod8u.com

ALL PLANS, DIMENSIONS, AREAS AND SPECIFICATIONS ARE APPROXIMATE AND ARE SUBJECT TO CHANGE WITHOUT NOTICE. ALTHOUGH OTHER FACTORS WILL POSSIBLY INFLUENCE THE FINAL DECISION, THE ULTIMATE SATISFACTION OF THE END USER IS HIGH PRIORITY.